

Structure of Medium Geared Motor

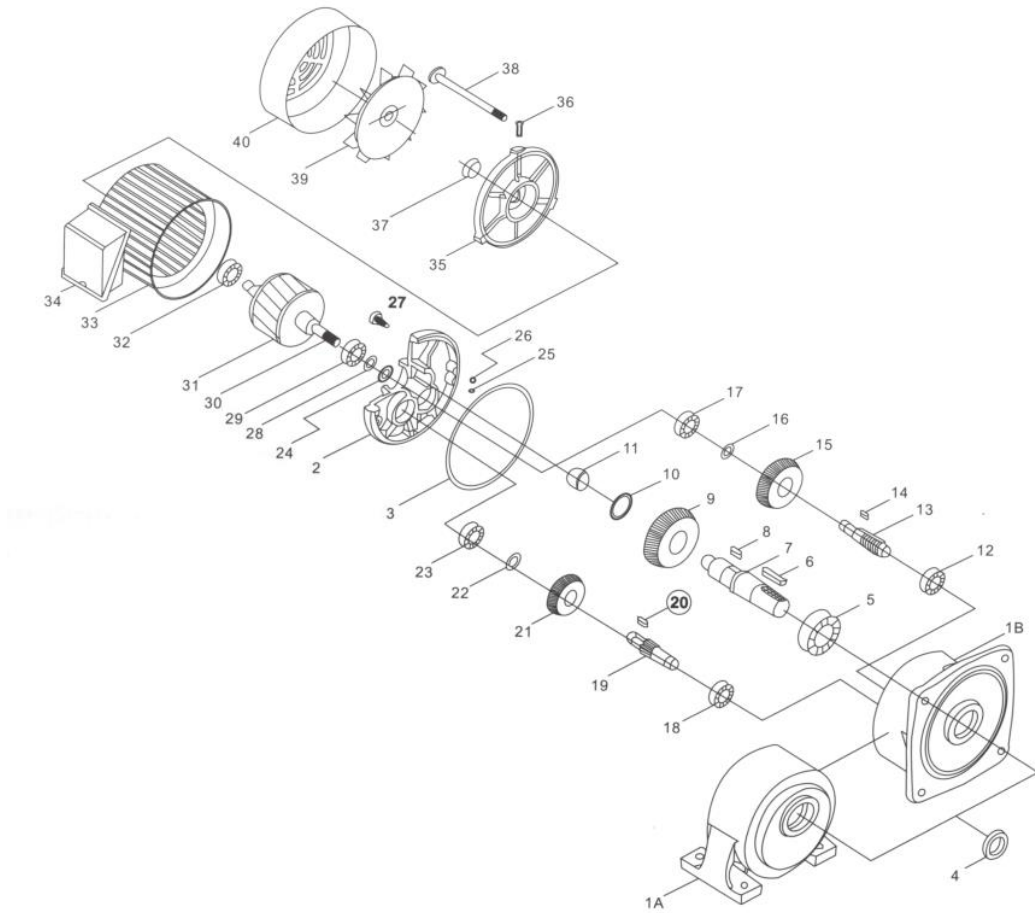


Electric Geared Reducer Motor Manufacturer

Interpretation

The geared motor is a specific type of electrical motor that is designed to produce high torque while maintaining a low horsepower, or low speed, motor output. Gear motors can be found in many different applications, and are probably used in many devices.

Structure Definition:



Item No.	Name	Item No.	Name	Item No.	Name
1A	Horizontal Housing	14	3rd Slotting	28	Wave Gasket
1B	Vertical Housing	15	2nd Gear	29	Bearing
2	Front Cover	16	C-shape Snap Ring	30	Gear Shaft
3	Oil Ring	17	3rd Bearing	31	Rotor
4	Oil Seal for Output Shaft	18	2nd Bearing	32	Bearing
5	Output Shaft Bearing	19	2nd Gear Shaft	33	Stator
6	Output Slotting	20	2nd Slotting	34	Junction Box
7	Output Shaft	21	1st Gear	35	Rear Cover
8	3rd Slotting	22	C-shape Snap Ring	36	Screw for Fan Cover
9	3rd Gear	23	2nd Bearing	37	Oil Seal for Rear Cover

10	C-shape Snap Ring	24	Oil Seal for Input Shaft	38	Bolt
11	Self-lubricating Oil Seal for Output Shaft	25	Pin	39	Fan
12	2nd Bearing	26	O-shape Ring	40	Fan Cover
13	3rd Gear Shaft	27	Inner Hexagon Screw		